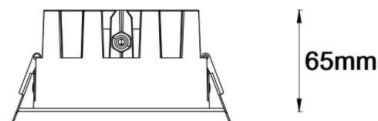
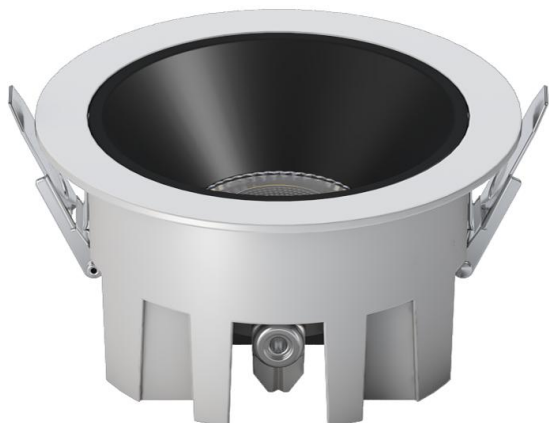


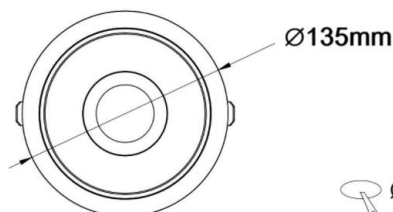
[LORICO] _ LDL963

24w LED Downlight With IP65 Waterproof

Rio
LIGHT DYNAMIC



65mm



Ø135mm

Ø115mm



General Information

Housing Material:	Aluminium	Diffuser Material:	PC
Colour (RAL):	White(9016) - Black(9004)	Weight:	430g (lamp)
Dimensions (L-W-H):	Dia.135mm - H65mm	Cut hole :	115mm
Connection:	AC Connector	Installation:	Recessed Mounted
Rotation Angle:	N/A	Tilting Angle:	N/A
Temperature:	-20 ~ +35°C	Accessories:	N/A

Photometrical Data

LED Manufacturer:	Luminus	LED Type:	CXM-14(G6)
CCT:	2700K - 3000K - 4000K	CRI(Minimum):	90
lm system (±5%):	2075lm - 2151lm -2258lm (#)	lm source:	3243lm - 3360lm - 3526lm
Luminous Efficiency:	76lm/w - 79lm/w - 83lm/w	MacAdam:	3
Optic:	Lens + Anti-glare cover	Beam Angle:	28°/48°
UGR:	<22	LifeSpan (Ta25°C):	>50.000h - L70B50

Electrical Data

Driver:	LIFUD	Input Voltage:	220-240VAC 50/60Hz
Output Voltage:	25-42VDC	Output Current:	700mA
Power Factor:	≥0.9	SVM & Pst:	≤0.4 & ≤1
W system:	27.4W	Ballast Losses:	3.5W
Control:	ON/OFF	Minimum Dimming:	N/A
Inrush Current:	24A / 114μs	Max No. of Units	B10/13/16 = 25/-/40
		per MCB:	C10/13/16 = 41/-/68

Note: # means the data is base on the Matt-black color anti-glare cover.

[LORICO] _ LDL963

24w LED Downlight With IP65 Waterproof



Accessories

Anti-glare Cover Color			
 Matt-black	 Matt-white	 Fog-silver	 Rose-gold
 Bright-black	 Bright-white	 Chrome	 Chrome-black

Note: The different colors of anti-glare covers will affect the output of luminous flux, please refer to the test report and ies file.