

# PRODUCT DATASHEET

## Model: L4T527

Category: LED Tracklight

Description: 31w LED Tunable White Tracklight with adjustable beam angle in DALI dimming



## General Information

Material: Aluminum

Fitting Colors: Matte White/ Black/ Painted Silver

Rotation Angle (degree): 355

Tilting Angle (degree): 90

Track System: 6 wires

IP Rating: 20

Working Temperature (°C): -20 - +32

Storage Temperature (°C): -20 - +50



## Product Dimensions and Cut-out Information

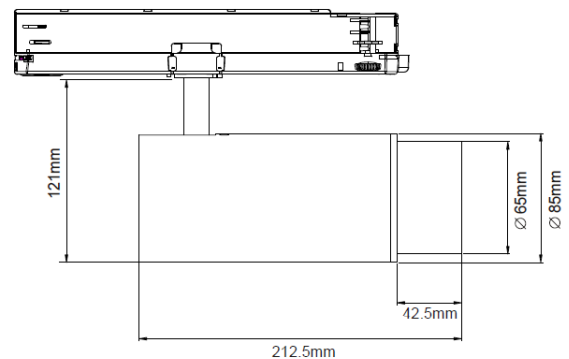
Fitting Length (mm): 180-212.5

Diameter (mm): 85

Height (mm): Not Applicable

Cut-out Dimension (mm): Not Applicable

Dimension:



## Packing Information

Packaging Type: Individual box

Quantity per carton: 12

CBM per carton: 0.08

Gross weight per carton (kgs): 14

## Lifespan

Lifetime (hours): 50000

Luminous Flux after 50000hours (lm): LM80 Comply

# PRODUCT DATASHEET

## Model: L4T527

Category: LED Tracklight

Description: 31w LED Tunable White Tracklight with adjustable beam angle  
in DALI dimming



## Light Technical Information

Color Temperature	CRI (Ra)	System Lumen	Lumen per Watt
2700	90	2070	56
3000	90	2131	58
4000	90	2195	59
5000	90	2329	63
6500	90	2398	65

LED Manufacturer: Bridgelux

LED Type: COB

LED Model: BXRV-TR-2765G-30A0-A-23

Optic: Lens

Beam Angle (°): 15-50

## Electrical Information

System Power (w): 31

Input Voltage (v) & Frequency: 220-240V 50/60Hz

Output Voltage (v): 32-35

Current (mA): 900

DALI dimming: HEP:LWDC36W1000NLR-T2CH Integrated driver adaptor

Power Factor: 0.95

Efficiency (%): 84

Total Harmonic Distortion (%): 20

Ripple (%):  $\pm 5$

Dimming Range (%): 1-100